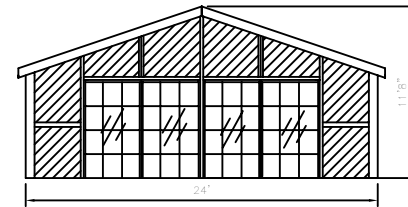
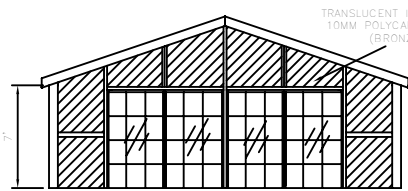
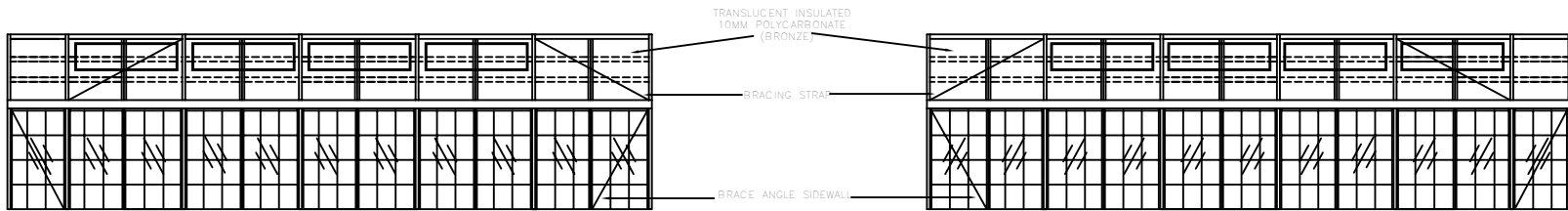
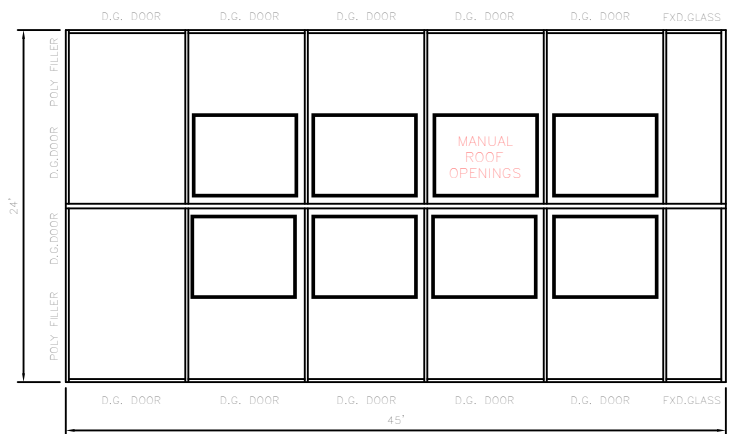


GABLE AND SIDEWALL ELEVATIONS

(24' X 45')  
WITH MUTTONS



FLOOR PLAN



30PSF LIVE LOAD  
 80MPH WIND LOAD  
 2006 IBC

GENERAL NOTES:  
 ALL STRUCTURAL MEMBERS ARE  
 WHITE POWDER COAT  
 SEE TYPICAL ASSEMBLY DRAWINGS FOR  
 SUGGESTED FOUNDATION  
 FOUNDATION SUBJECT TO LOCAL CODES  
 AND CONDITIONS  
 FOUNDATION BY OTHERS (NOT GARDEN PRAIRIE)

ALL FASTENERS SHALL BE STAINLESS  
 STEEL OR CORROSION RESISTANT - TOUCH UP PAINT IN FIELD  
 TO BE TO CONSOLIDATED CONSUMER  
 SERVICES SPEC.  
 FLASHING TO CURB NOT SUPPLIED BY  
 CONSOLIDATED CONSUMER SERVICES  
 DIMENSION SUBJECT TO CHANGE  
 UPON FABRICATION

GARDEN PRAIRIE  
POOL & SPA ENCLOSURES

SCALE NONE  
 DRAWN BY CC SI-DR 11/6/02  
 CHECKED BY DJE

RESIDENCE WITH MUTTONS

DRAWING NUMBER # 1  
 SHEET NUMBER

8642 HWY. 20 WEST (815) 544-8385  
 GARDEN PRAIRIE, ILLINOIS 61038 FAX-(815) 544-4353

REVISIONS	APPROVED BY	DATE	DESCRIPTION	DATE