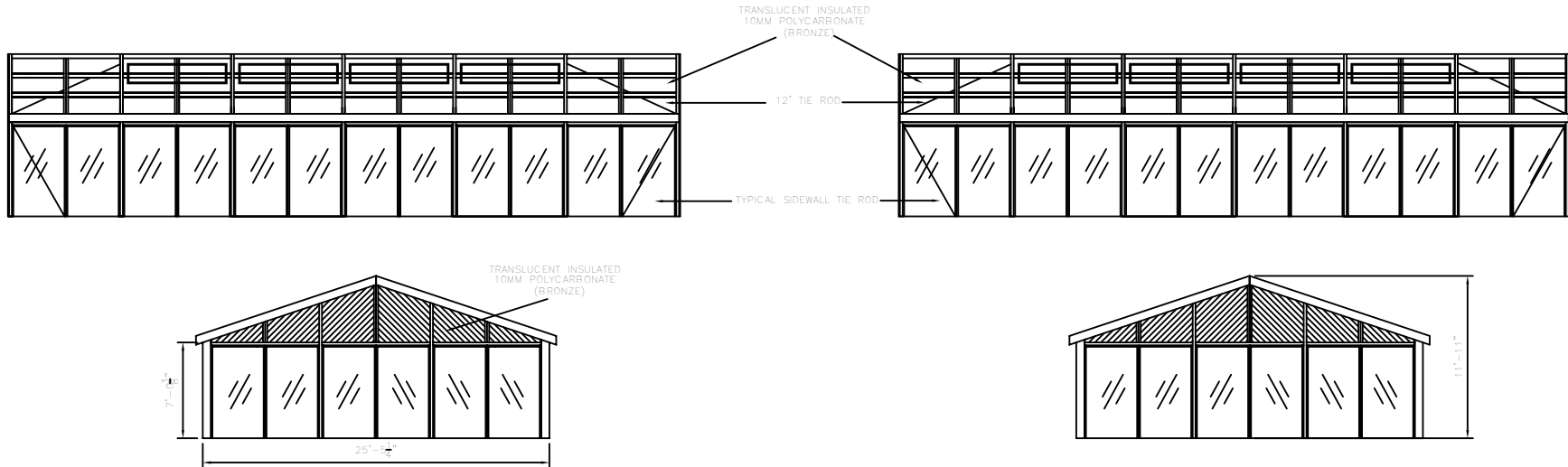


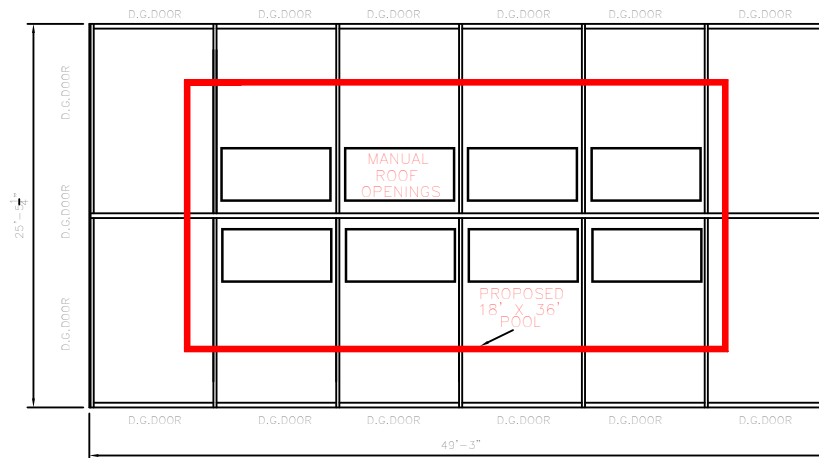
GABLE AND SIDEWALL ELEVATIONS

(25' 5 1/4" X 49' 3")

NONE



FLOOR PLAN



ALL FASTENERS SHALL BE STAINLESS STEEL OR CORROSION RESISTANT. TOUCH UP PAINT IN FIELD TO BE TO CCSI SPECS.

FLASHING TO CURB NOT SUPPLIED BY CCSI.

DIMENSION SUBJECT TO CHANGE UPON FABRICATION.

30PSF LIVE LOAD  
80MPH WIND LOAD  
2006 IRC

GENERAL NOTES:  
ALL STRUCTURAL MEMBERS ARE POWDER COAT  
SEE TYPICAL ASSEMBLY DRAWINGS FOR SUGGESTED FOUNDATION  
FOUNDATION SUBJECT TO LOCAL CODES AND CONDITIONS

FOUNDATION BY OTHERS (NOT GARDEN PRAIRIE)

GARDEN PRAIRIE  
POOL & SPA ENCLOSURES

8842 HWY. 20 WEST (815) 544-8385  
GARDEN PRAIRIE, ILLINOIS 61038 FAX-(815) 544-4353

SCALE	1/4"
DRAWN BY	CCSI-DR
CHECKED BY	DR
DATE	1/8/14

RESIDENCE WITH 18' X 36' POOL

DRAWING NUMBER	NONE
PLAN NUMBER	
SHEET NUMBER	

REVISIONS	DRAWN BY	DATE	INCHES BY	DATE