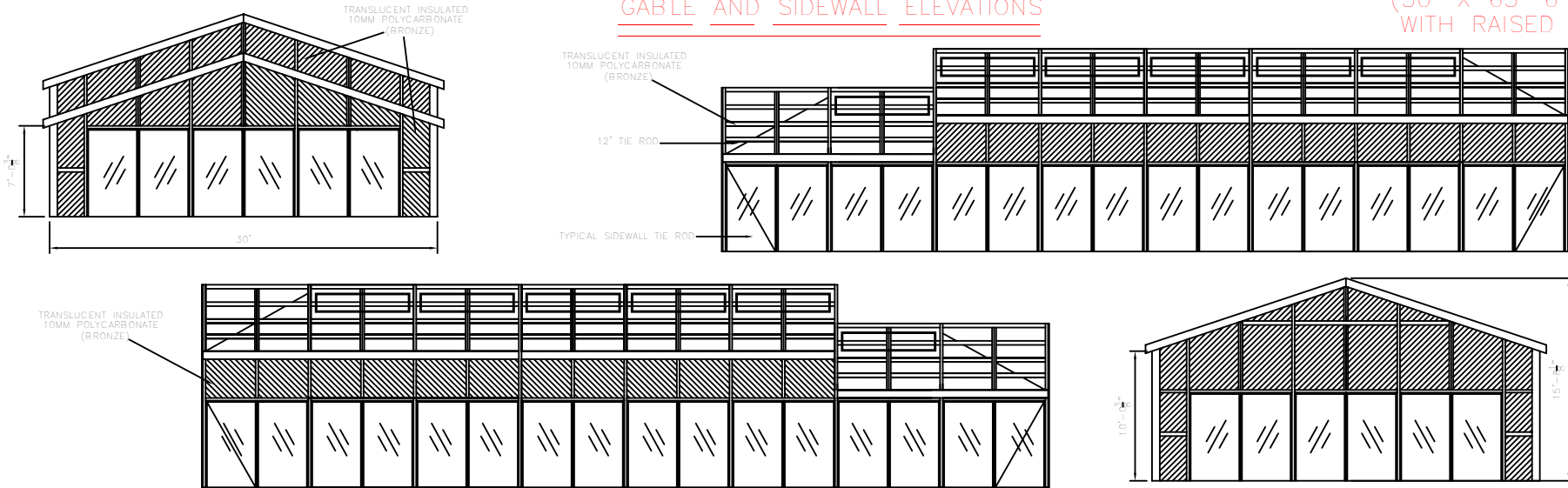
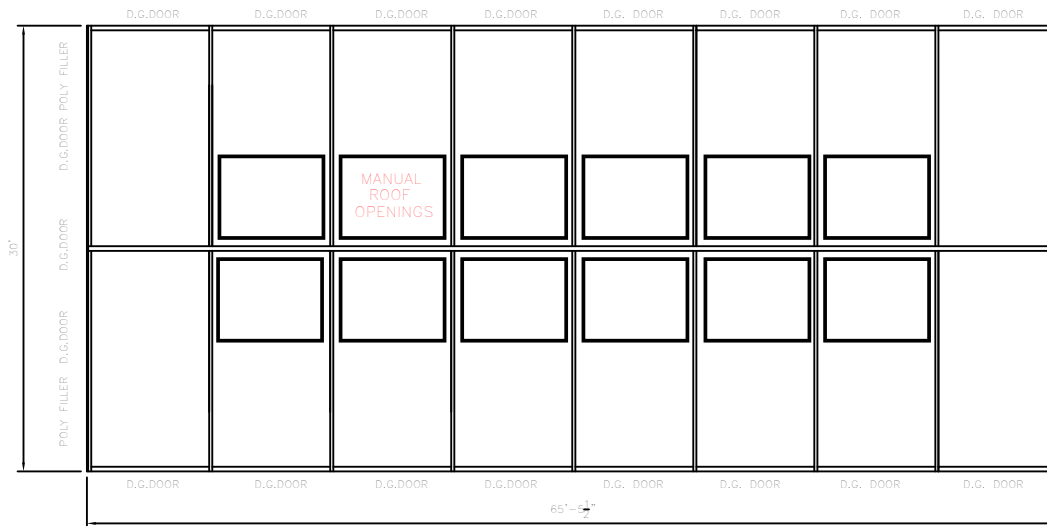


GABLE AND SIDEWALL ELEVATIONS

(30' X 65' 6 1/2")
WITH RAISED BAYS



FLOOR PLAN



30PSF LIVE LOAD
80MPH WIND LOAD
2006 IRC

ALL FASTENERS SHALL BE STAINLESS
STEEL OR CORROSION RESISTANT.
TOUCH UP PAINT IN FIELD
TO BE TO CCS SPEC.

FLASHING TO CURB NOT SUPPLIED BY
CCS.

DIMENSION SUBJECT TO CHANGE
UPON FABRICATION.

GENERAL NOTES:
ALL STRUCTURAL MEMBERS ARE
POWDER COAT
SEE TYPICAL ASSEMBLY DRAWINGS FOR
SUGGESTED FOUNDATION
FOUNDATION SUBJECT TO LOCAL CODES
AND CONDITIONS

FOUNDATION BY OTHERS (NOT GARDEN PRAIRIE)

GARDEN PRAIRIE
POOL & SPA ENCLOSURES

| | |
|----------------------|---------------------|
| SCALE: 1/4" | DATE: 5/19/11 |
| DRAWN BY: CCSL-DB | CHECKED BY: [blank] |
| DESIGNED BY: [blank] | DATE: [blank] |

RESIDENCE WITH RAISED BAYS

| |
|-----------------------|
| DRAWING NUMBER: #4035 |
| PLAN NUMBER: [blank] |
| SHEET NUMBER: [blank] |

| | | |
|-----|------|-------------|
| REV | DATE | DESCRIPTION |
| | | |
| | | |
| | | |

RR42 HWY. 20 WEST (815) 544-8385
GARDEN PRAIRIE, ILLINOIS 61038 FAX-(815) 544-4352