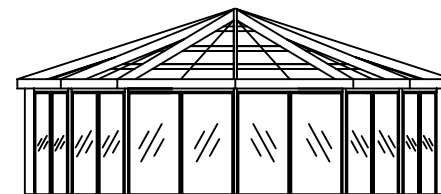
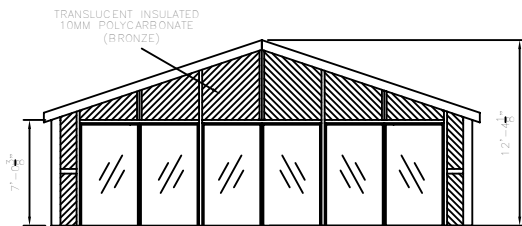
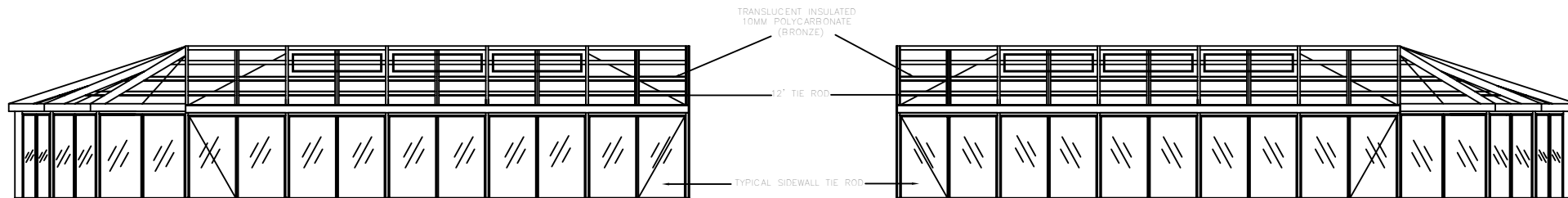
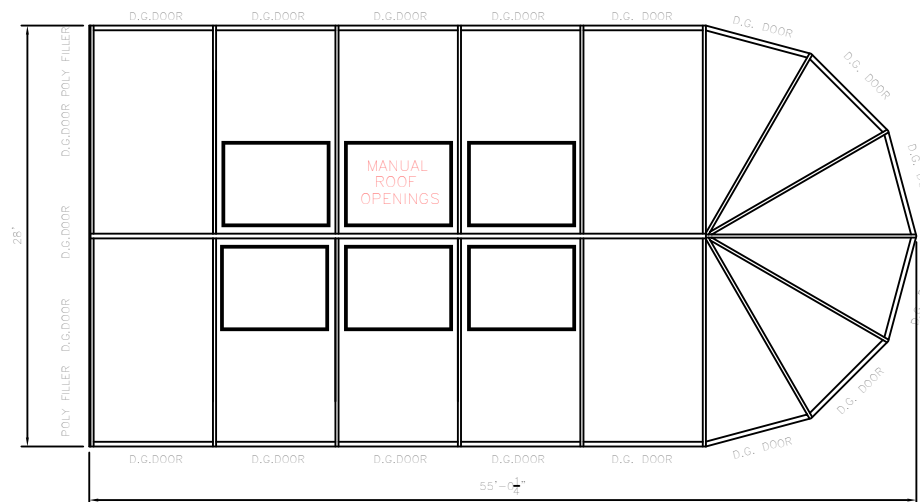


GABLE AND SIDEWALL ELEVATIONS

(28' X 55' 1/4")
WITH ROUND END



FLOOR PLAN



30PSF LIVE LOAD
80MPH WIND LOAD
2006 IRC

ALL FASTENERS SHALL BE STAINLESS
STEEL OR CORROSION RESISTANT.
TOUCH UP PAINT IN FIELD
TO BE TO CCSI SPECS.

FLASHING TO CURB NOT SUPPLIED BY
CCSI.

DIMENSION SUBJECT TO CHANGE
UPON FABRICATION.

GENERAL NOTES:
ALL STRUCTURAL MEMBERS ARE
POWER COAT
SEE TYPICAL ASSEMBLY DRAWINGS FOR
SUGGESTED FOUNDATION
FOUNDATION SUBJECT TO LOCAL CODES
AND CONDITIONS
FOUNDATION BY OTHERS (NOT GARDEN PRAIRIE)

GARDEN PRAIRIE
POOL & SPA ENCLOSURES

RR42 HWY. 20 WEST (815) 544-8385
GARDEN PRAIRIE, ILLINOIS 61038 FAX-(815) 544-4353

SCALE	NONE
DRAWN BY	CCSI-DR
DATE	2/14/13
PROJECT NO.	

RESIDENCE-ROUND END

DRAWING NUMBER	NONE
PLAN NUMBER	
SHEET NUMBER	

REVISION	ISSUED BY	DATE	DESCRIPTION	APP.