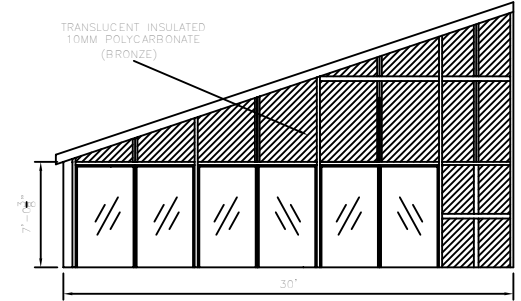
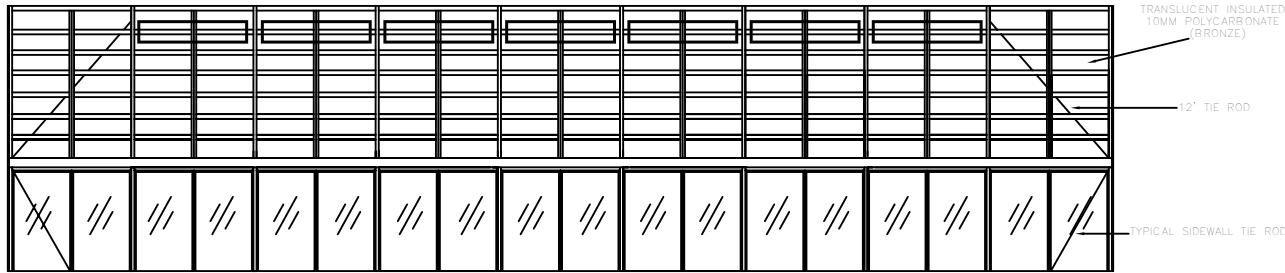


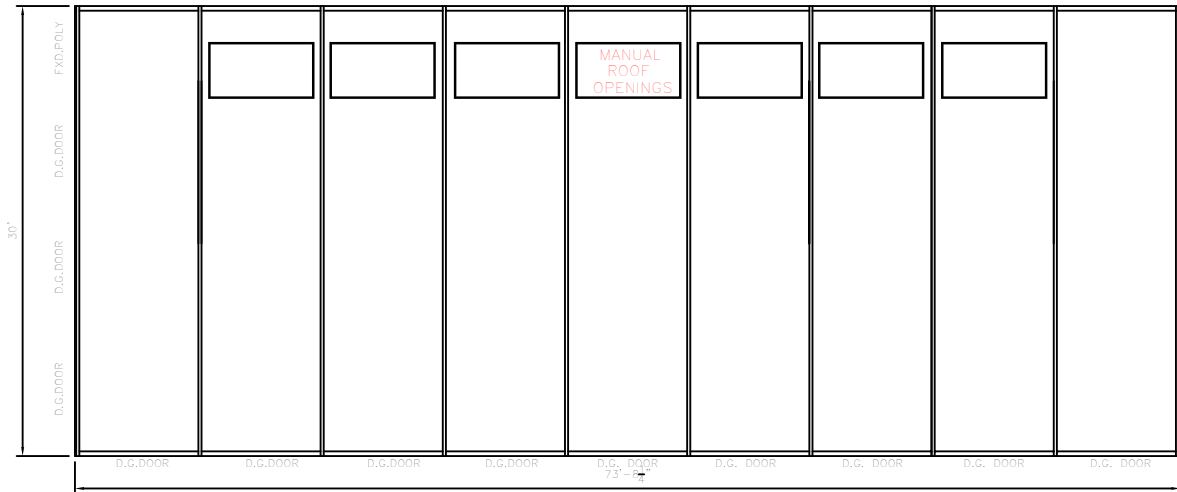
GABLE AND SIDEWALL ELEVATIONS

(30' x 73' 8 1/4")
LEAN 2



OPEN FOR ATTACHMENT

FLOOR PLAN



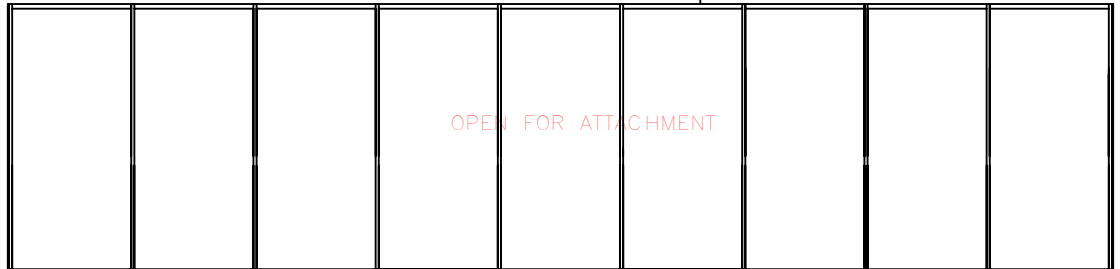
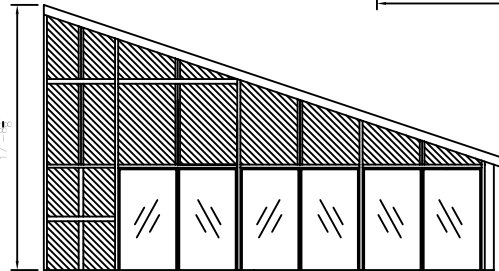
30PSF LIVE LOAD
80MPH WIND LOAD
2006 IRC

GENERAL NOTES:
ALL STRUCTURAL MEMBERS ARE _____ POWDER COAT
SEE TYPICAL ASSEMBLY DRAWINGS FOR SUGGESTED FOUNDATION
FOUNDATION SUBJECT TO LOCAL CODES AND CONDITIONS
FOUNDATION BY OTHERS (NOT GARDEN PRAIRIE)

ALL FASTENERS SHALL BE STAINLESS STEEL OR CORROSION RESISTANT. TOUCH UP PAINT IN FIELD TO BE TO CCSI SPECS.

FLASHING TO CURB NOT SUPPLIED BY CCSI.

DIMENSION SUBJECT TO CHANGE UPON FABRICATION.



GARDEN PRAIRIE
POOL & SPA ENCLOSURES

SCALE	1/4"
DRAWN BY	CCSI-DR
CHECKED BY	DR
DATE	7/9/13

HOTEL LEAN TWO

DRAWING NUMBER	NONE
TURN NUMBER	
SHEET NUMBER	

8642 HWY. 20 WEST (815) 544-8285
GARDEN PRAIRIE, ILLINOIS 61038 FAX--(815) 544-4353

NO.	DATE	BY	DESCRIPTION