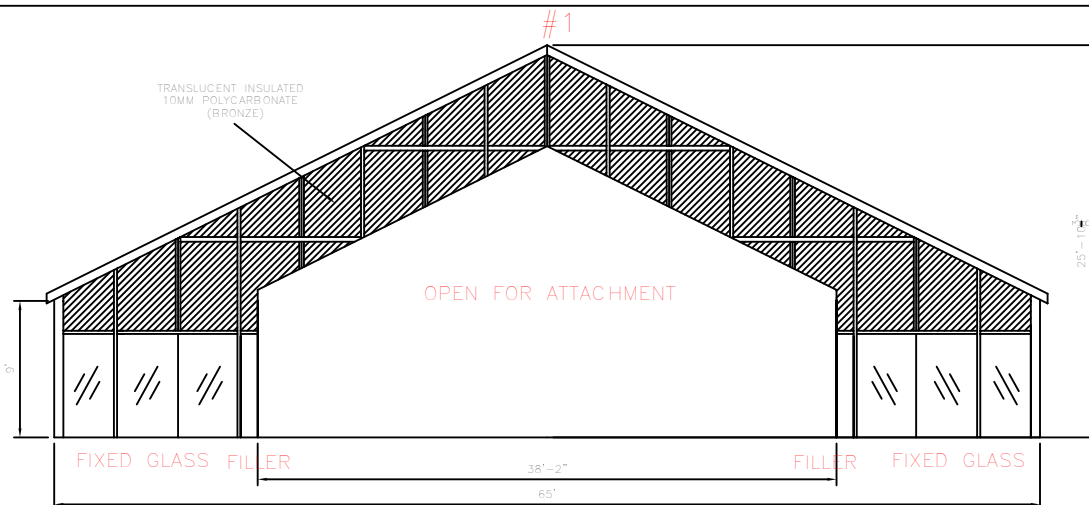
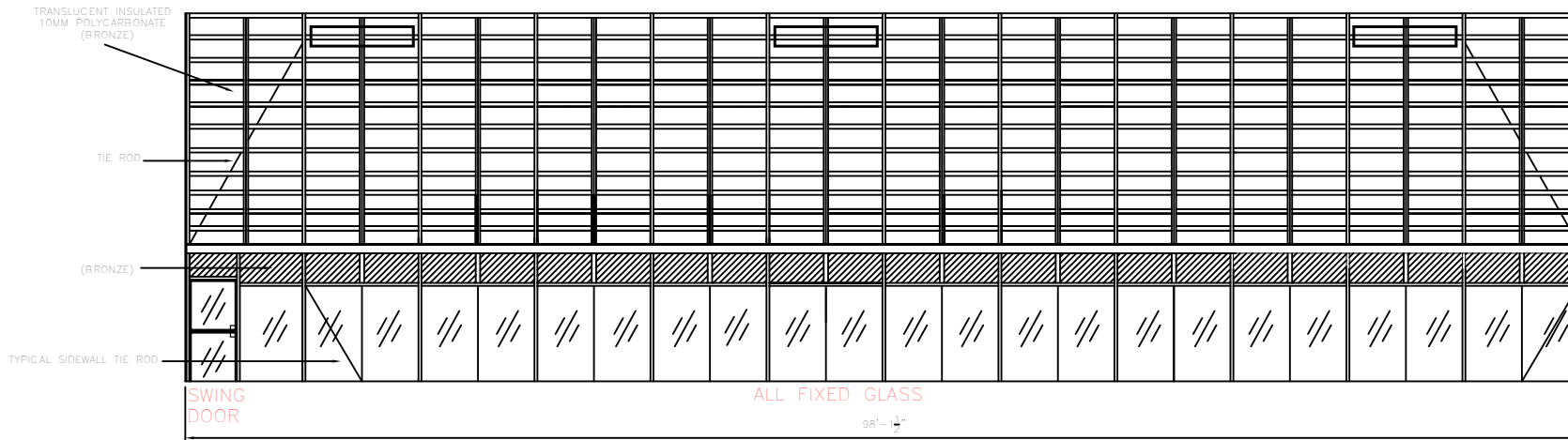


GABLE AND SIDEWALL ELEVATIONS

(65' X 98' 1 1/2")

AIR FORCE BASE

#1



ALL FASTENERS SHALL BE STAINLESS STEEL OR CORROSION RESISTANT. TOUCH UP PAINT IN FIELD TO BE TO CCSI SPECS.

FLASHING TO CURB NOT SUPPLIED BY CCSI.

DIMENSION SUBJECT TO CHANGE UPON FABRICATION.

GENERAL NOTES:
 ALL STRUCTURAL MEMBERS ARE _____ POWDER COAT
 SEE TYPICAL ASSEMBLY DRAWINGS FOR SUGGESTED FOUNDATION
 FOUNDATION SUBJECT TO LOCAL CODES AND CONDITIONS
 FOUNDATION BY OTHERS (NOT GARDEN PRAIRIE)

GARDEN PRAIRIE
POOL & SPA ENCLOSURES

8642 HWY. 20 WEST (815) 544-8385
 GARDEN PRAIRIE, ILLINOIS 61038 FAX-(815) 544-4353

SCALE	NONE
DRAWN BY	CCSI-DR
CHECKED BY	
DATE	5/26/08

AIR FORCE BASE

DRAWING NUMBER	#4034-1
PLAN NUMBER	
SHEET NUMBER	

REVISIONS	DATE	BY	DESCRIPTION